

POSTMASTERS

postmasters 459 w 19 street nyc 10011 212 727 3323

fax 212 229 2829

postmasters@thing.net

October 20 - November 24, 2012

JENNIFER & KEVIN McCOY TWENTY ONE TWELVE

front gallery:



JENNIFER & KEVIN McCOY *BEHIND THE HILLSIDE*

2012

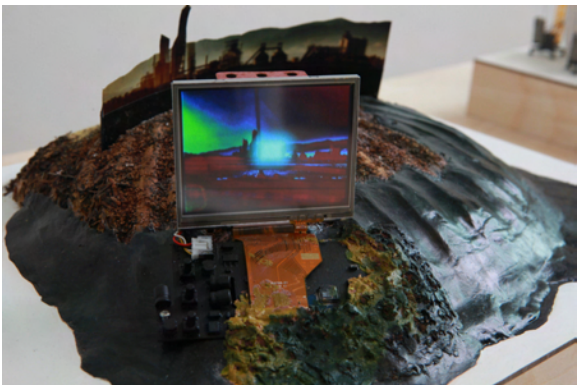
foam, aqua resin, dirt, plastic model elements, painted debris, wood, LCD screen, electronics, power supply, video player, masonite panel
6.5 x 16 x 20 inches



JENNIFER & KEVIN McCOY *NEAR THE COMMUNICATION TOWER*

2012

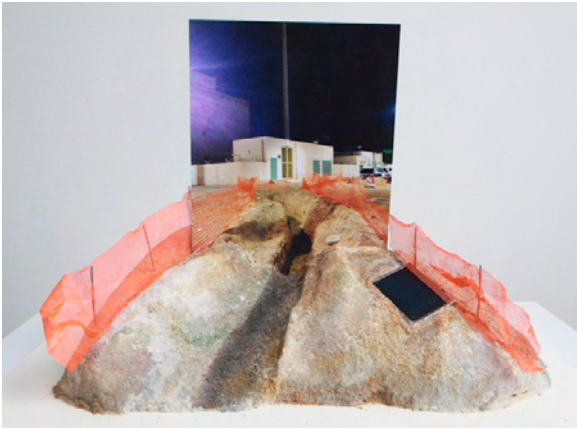
laser-cut c-print on aluminum, wire mesh, tar, spray paint, plastic model elements, LCD screen, electronics, power supply, video player, masonite panel
8 x 12 x 16 inches



JENNIFER & KEVIN McCOY *ALONG THE ROADSIDE*

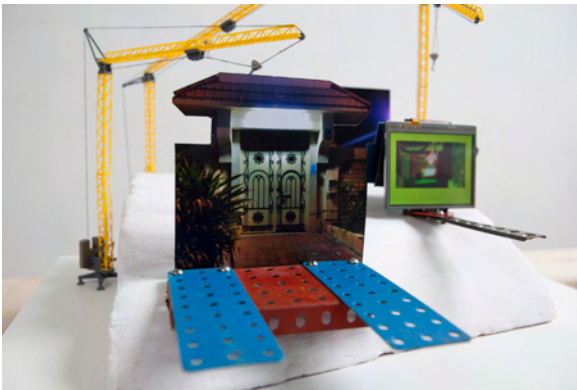
2012

foam, aqua resin, laser-cut c-print on aluminum, steel piece from Kevin's childhood Erector Set, acrylic paint, magic-sculpt, dirt, LCD screen, electronics, power supply, video player, masonite panel
7.5 x 12 x 16 inches



**JENNIFER & KEVIN McCOY
IN FRONT OF THE SUBSTATION**

2012
foam, aqua resin, sand, laser-cut c-print on aluminum, wire mesh, acrylic paint, LCD screen, electronics, power supply, video player, masonite panel
14 x 16 x 20 inches



**JENNIFER & KEVIN McCOY
NEAR THE NEW VILLAS**

2012
foam, aqua resin, laser-cut c-print on aluminum, steel and plastic pieces from Kevin's childhood Erector Set, plastic model elements, LCD screen, electronics, power supply, video player, masonite panel
12.5 x 12 x 16 inches



**JENNIFER & KEVIN McCOY
AT THE OLD HEADQUARTERS**

2012
cast plaster, tar, ink, LCD screen, electronics, power supply, video player, masonite panel
11 x 12 x 12 inches



**JENNIFER & KEVIN McCOY
BETWEEN THE RESORTS**

2012
handmade palm trees, paper, balsa wood, plastic model elements, laser-cut c-print on aluminum LCD screen, electronics, power supply, video player, masonite panel
11 x 16 x 20 inches

POSTMASTERS

postmasters 459 w 19 street nyc 10011 212 727 3323

fax 212 229 2829 postmasters@thing.net



JENNIFER & KEVIN McCOY ***NEXT TO THE PARKING LOT***

2012

magic-sculpt, foil, laser-cut c-print on aluminum, plastic model elements, LCD screen, electronics, power supply, video player, masonite panel
7 x 16 x 20 inches

back gallery:



JENNIFER & KEVIN McCOY ***PRIEST OF THE TEMPLE***

2012

foam, aqua resin, cast plaster, chalk and plaster dust, wire, pebbles, laser-cut c-print on aluminum, masonite panel, LCD screen, electronics, power supply, video player, 2 IP video cameras, network router, mac mini, software, video projection, sound, wood and aluminum table
43 x 30 x 60 inches
(13 x 20 x 24 inches sculpture)



JENNIFER & KEVIN McCOY ***CHRYSALIS***

2012

foam, plaster, burlap, cast latex, acrylic paint, steel wire, plastic model elements, masonite panel, LCD screen, electronics, power supply, video player, 2 IP video cameras, network router, mac mini, software, video projection, sound, wood and aluminum table
43 x 30 x 60 inches
(13 x 16 x 16 inches sculpture)